

# NIDO & MARIANA QUBEIN CHILDREN'S MUSEUM

NORTH CAROLINA STANDARDS ALIGNMENT

## SECOND GRADE



# INTRODUCTION

Each exhibit within the Nido and Mariana Qubein Children’s Museum aligns with the North Carolina standard course of study in eight subject areas. We believe children learn best when they have opportunities to explore open-ended concepts through play and inquiry. “We learn more by looking for the answer to a question and not finding it than we do from learning the answer itself” (Lloyd Alexander) and therefore encourage all of our visitors to ask questions, make mistakes, and discover solutions through play. A visit to the museum includes inquiry-based activities directly correlated to each of the following standards in second grade.

While all of our exhibits integrate multiple subject areas, those most applicable to each subject area appear above the standards which are aligned to that exhibit.

Our unique field trip experiences can cater to the needs of your class or group. Are you looking for specific support or reinforcement on a particular concept, ask, and we will be happy to help!

## OPTIONAL DISCOVERY GUIDE LED LESSON

(\$3 per student)

Our Discovery Guide led field trip experience integrates all of the elements of STEAM through a fun, engaging, and hands-on 45 minute lesson and experiment. After the lesson, students will be deeply engaged in all the museum has to offer and better prepared to fully immerse themselves in the activities and learning opportunities available in each exhibit. Additionally, a museum scavenger hunt catered to second grade standards is available for use by classroom chaperones and students to ensure they receive the complete museum experience!



# ARTS EDUCATION – DANCE AND MUSIC

*The “Big Kid” room and Playroom are specifically geared to get kids singing, dancing and creating! Fun music, tik tok challenges, the giant piano and more can be used to hone students’ performing arts abilities. The following dance and music standards are in practice during a visit to the museum.*

## CREATION AND PERFORMANCE

2.CP.1 Use choreographic principles, structures, and processes to create dances that communicate ideas, experiences, feelings, and images.

2.CP.2 Understand how to use performance values (kinesthetic awareness, concentration, focus, and etiquette) to enhance dance performance.

## DANCE MOVEMENT SKILLS

2.DM.1 Understand how to use movement skills in dance.

## RESPONDING

2.R.1 Use a variety of thinking skills to analyze and evaluate dance.

## CONNECTING

2.C.1 Understand cultural, historical, and interdisciplinary connections with dance.

## MUSICAL LITERACY

2.ML.1 Apply the elements of music and musical techniques in order to sing and play music with accuracy and expression.

2.ML.3 Create music using a variety of sound and notational sources.

## MUSICAL RESPONSE

2.MR.1 Understand the interacting elements to respond to music and music performances.

## CONTEXTUAL RELEVANCY

2.CR.1 Understand global, interdisciplinary, and 21st century connections with music.



# ARTS EDUCATION – THEATRE ARTS

*WHPU-TV, the Play Room, and the outdoor amphitheater are perfect areas for students to explore their theatre arts passions! In these spaces, visitors of all ages will enjoy imagining, creating, acting out and viewing a wide array of theatrical productions, whether filmed on the green screens, demonstrated with puppets or set on the outdoor stage! The following theatre arts standards are in practice during a visit to the museum.*

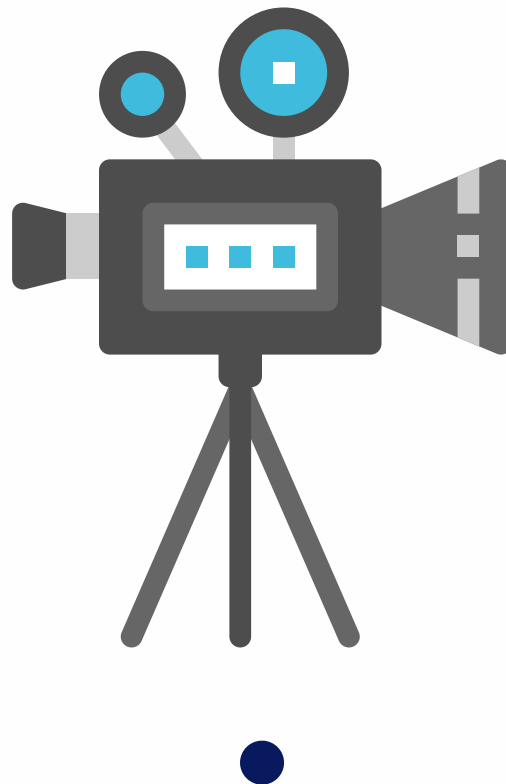
## COMMUNICATION

2.C.1 Use movement, voice, and writing to communicate ideas and feelings.

2.C.2 Use performance to communicate ideas and feelings.

## AESTHETICS

2.AE.1 Understand how to design technical theatre components, such as costumes, sets, props, makeup, lighting, and sound.



# ARTS EDUCATION – VISUAL ARTS

Visitors will delve into the many facets of the visual arts throughout the Nido and Mariana Qubein Children’s Museum! However, the Art Studio, Furniture Design Studio and STEAM Lab are specifically designed to showcase these areas and provide hands-on learning environments that offer creative experiences that encourage imagination, creativity and discovery while encouraging the integration of STEAM concepts. The following visual arts standards are in practice during a visit to the museum.

## VISUAL LITERACY

- 2.V.1 Use the language of visual arts to communicate effectively.
- 2.V.2 Apply creative and critical thinking skills to artistic expression.
- 2.V.3 Create art using a variety of tools, media, and processes, safely and appropriately.

## CONTEXTUAL RELEVANCY

- 2.CX.1 Understand the global, historical, societal, and cultural contexts of the visual arts.
- 2.CX.2 Understand the interdisciplinary connections and life applications of the visual arts.

## CRITICAL RESPONSE

- 2.CR.1 Use critical analysis to generate responses to a variety of prompts.



# ENGLISH LANGUAGE ARTS

*As a print rich environment, the Nido and Mariana Qubein Children's Museum naturally encourages students' growth in Language Arts in a fun and engaging way! Eye-catching graphics with facts and thought provoking text get even the youngest of learners eager to read. While the entire museum is a dedicated space for practicing Language Arts, the following exhibits will stretch visitors' learning in this area: Kids Point, Hall of Mysteries, Mars Academy, STEAM Lab and Nations. Additionally, speaking, listening, collaboration and communication are major components of a day at the museum! In every exhibit, students will be encouraged and guided through collaborating with other visitors to imagine, create, test and explore! The following English Language Arts standards are in practice during a visit to the museum.*

## READING STRAND

### READING STANDARDS FOR LITERATURE

RL.2.1 Ask and answer such questions as who, what, where, when, why, and how to demonstrate understanding of key details in a text.

RL.2.10 By the end of grade 2, read and understand literature within the 2-3 text complexity band proficiently and independently for sustained periods of time. Connect prior knowledge and experiences to text.

### READING STANDARDS FOR INFORMATIONAL TEXT

RI.2.1 Ask and answer such questions as who, what, where, when, why, and how to demonstrate understanding of key details in a text.

RI.2.2 Identify the main topic of a multi-paragraph text as well as the focus of specific paragraphs within the text.

RI.2.3 Describe the connection between a series of historical events, scientific ideas or concepts, or steps in technical procedures in a text.

RI.2.4 Determine the meaning of words and phrases in a text relevant to a grade 2 topic or subject area.

RI.2.5 Know and use various text features to locate key facts or information in a text efficiently

RI.2.6 Identify the author's main purpose of a text, including what the author wants to answer, explain, or describe.

RI.2.7 Explain how specific images contribute to and clarify a text.

RI.2.10 By the end of grade 2, read and understand informational texts within the 2-3 text complexity band proficiently and independently for sustained periods of time.

Connect prior knowledge and experiences to text.

## READING FOUNDATIONAL SKILLS

Phonics and Word Recognition

RF.2.4 Know and apply grade-level phonics and word analysis skills in decoding words.

Fluency

RF.2.5 Read with sufficient accuracy and fluency to support comprehension.

## SPEAKING AND LISTENING STRAND

Collaboration and Communication

SL.2.1 Participate in collaborative conversations with diverse partners about grade 2 topics and texts with peers and adults in small and larger groups.

SL.2.2 Recount or describe key ideas or details from a text read aloud or information presented orally or through other media.

SL.2.3 Ask and answer questions about what a speaker says in order to clarify comprehension, gather additional information, or deepen understanding of a topic or issue.

Presentation of Knowledge and Ideas

SL.2.4 Tell a story or recount an experience with appropriate facts and relevant, descriptive details, speaking audibly in coherent and complete sentences.

SL.2.5 Create audio recordings of stories or poems; add drawings or other visual displays to stories or recounts of experiences when appropriate to clarify ideas, thoughts, and feelings.

## LANGUAGE STRAND

Conventions of Standard English

L.2.1 Demonstrate command of the conventions of standard English grammar and usage when writing or speaking; demonstrate proficiency within the 2-3 grammar continuum.

Knowledge of Language

L.2.3 Use knowledge of language and its conventions when writing, speaking, reading, or listening.

Vocabulary Acquisition and Use

L.2.4 Determine and/or clarify the meaning of unknown and multiple-meaning words and phrases based on grade 2 reading and content, choosing flexibly from an array of strategies: context clues, word parts, word relationships, and reference materials.

L.2.6 Use words and phrases learned through conversations, reading and being read to, and responding to texts, including using adjectives and adverbs to describe.



# HEALTHFUL LIVING

## HEALTH AND PHYSICAL EDUCATION

*The physical, mental, and emotional health of our community, particularly our children, is of the utmost importance to the Nido and Mariana Qubein Children's Museum. This is why when children visit the museum, the first and foremost thing they will do is have fun! We know that the more fun and exercise kids get, the better they will learn! All of our exhibits get students actively moving and engaged in learning. The Witcher Super U Fit Lab in conjunction with the Kids Point Cafe, Dentist, Fire Department, Emergency Medical Services, and Grocery actively educates visitors on healthy choices in their physical activities, diet and lifestyle choices. The following healthful living standards are in practice during a visit to the museum.*

### MENTAL AND EMOTIONAL HEALTH

2.MEH.1 Understand the relationship among healthy expression of emotions, mental health, and healthy behavior.

### PERSONAL AND CONSUMER HEALTH

2.PCH.1 Apply measures for cleanliness and disease prevention.

2.PCH.2 Understand wellness, disease prevention, and recognition of symptoms.

### INTERPERSONAL COMMUNICATION AND RELATIONSHIPS

2.ICR.1 Understand healthy and effective interpersonal communication and relationships.

### NUTRITION AND PHYSICAL ACTIVITY

2.NPA.2 Understand the importance of consuming a variety of nutrient dense foods and beverages in moderation.

2.NPA.3 Remember nutrition and fitness concepts to enhance quality of life.

### MOTOR SKILL DEVELOPMENT

2.MS.1 Apply competent motor skills and movement patterns needed to perform a variety of physical activities.

### MOVEMENT CONCEPTS

2.MC.2 Understand concepts, principles, strategies and tactics that apply to the learning and performance of movement.

### HEALTH-RELATED FITNESS

2.HF.3 Understand the importance of achieving and maintaining a health-enhancing level of physical fitness.

### PERSONAL/SOCIAL RESPONSIBILITY

2.PR.4 Use behavioral strategies that are responsible and enhance respect of self and others and value activity.





# MATHEMATICS

*Mathematics skills are a necessity for everyday life and are a significant component of the Nido and Mariana Qubein Children's Museum STEAM programs. Students will implement the following mathematics standards throughout the museum, but especially in the STEAM Lab, Kids Point Grocery, Cafe, Furniture Design Studio, Speed and Sport, and the Hall of Mysteries. The following Mathematics standards are put into practice during a visit to the museum.*

## OPERATIONS AND ALGEBRAIC THINKING

NC.2.OA.1 Represent and solve addition and subtraction word problems, within 100, with unknowns in all positions, by using representations and equations with a symbol for the unknown number to represent the problem.

NC.2.OA.2 Demonstrate fluency with addition and subtraction, within 20, using mental strategies.

NC.2.OA.4 Use addition to find the total number of objects arranged in rectangular arrays with up to 5 rows and up to 5 columns; write an equation to express the total as a sum of equal addends.

## NUMBER AND OPERATIONS IN BASE TEN

NC.2.NBT.1 Understand that the three digits of a three-digit number represent amounts of hundreds, tens, and ones.

NC.2.NBT.2 Count within 1,000; skip-count by 5s, 10s, and 100s.

NC.2.NBT.3 Read and write numbers, within 1,000, using base-ten numerals, number names, and expanded form.

NC.2.NBT.5 Demonstrate fluency with addition and subtraction, within 100.

NC.2.NBT.6 Add up to three two-digit numbers using strategies based on place value and properties of operations.

NC.2.NBT.8 Mentally add 10 or 100 to a given number 100–900, and mentally subtract 10 or 100 from a given number 100–900.

## MEASUREMENT AND DATA

NC.2.MD.7 Tell and write time from analog and digital clocks to the nearest five minutes, using a.m. and p.m.

NC.2.MD.8 Solve word problems involving: Quarters, dimes, nickels, and pennies within 99¢, using ¢ symbols appropriately. Whole dollar amounts, using the \$ symbol appropriately.

NC.2.MD.10 Organize, represent, and interpret data with up to four categories.



# SCIENCE

*The Nido and Mariana Qubein Children's Museum is a beacon for Scientific exploration for kids! Science is exciting and intriguing when children can get messy, make mistakes, and experiment with what interests them. Elements of STEAM are found in every aspect of the Children's Museum and are especially highlighted in the STEAM Lab, Mars Academy, Water Works, Kids Point Speed 'N Sport Shop, Pet Clinic, and Hall of Mysteries. The following Science standards are in practice during a visit to the museum.*

## FORCES AND MOTION

2.P.1 Understand the relationship between sound and vibrating objects.

## MATTER: PROPERTIES AND CHANGE

2.P.2 Understand properties of solids and liquids and the changes they undergo.

## EARTH SYSTEMS, STRUCTURES AND PROCESSES

2.E.1 Understand patterns of weather and factors that affect weather.

## STRUCTURES AND FUNCTIONS OF LIVING ORGANISMS

2.L.1 Understand animal life cycles.

## EVOLUTION AND GENETICS

2.L.2 Remember that organisms differ from or are similar to their parents based on the characteristics of the organism.



# SOCIAL STUDIES

*The Nido and Mariana Qubein Children’s Museum enhances High Point’s city and surrounding areas while encouraging visitors to engage with the local community, appreciate our diversity, and better understand the unique cultures that come together across the globe. Students can read facts about countries around the world at the Nations Table, actively engage in “pop-up” activities centralized around cultural and historic celebrations, and will interact with economic and financial literacy concepts through exhibits such as Kids Point Cafe and Grocery. The following Social Studies standards are in practice during a visit to the museum.*

## HISTORY

2.H.1 Understand how various sources provide information about the past.

## GEOGRAPHY AND ENVIRONMENTAL LITERACY

2.G.1 Use geographic representations, terms and technology to process information from a spatial perspective.

2.G.2 Understand the effects of humans interacting with their environment.

## ECONOMICS AND FINANCIAL LITERACY

2.E.1 Understand basic economic concepts.

## CIVICS AND GOVERNMENT

2.C&G.2 Understand the roles and responsibilities of citizens

## CULTURE

2.C.1 Understand how various cultures influence communities.



# GUIDANCE

*The Nido and Mariana Qubein Children’s Museum is the perfect place for kids to be kids and learn through playing with one another! Through play, visitors learn communication, collaboration and problem-solving strategies while exploring the intersection of numerous community members and organizations that are available to support them.*

## SOCIO-EMOTIONAL

SE.1 Understand the meaning and importance of personal responsibility and self-awareness.

SE.2 Understand the relationship between self and others in the broader world.

SE.3 Use communication strategies effectively for a variety of purposes and audiences.

## COGNITIVE

C .1 Use creative strategies to make decisions and solve problems.

C .2 Use analytical strategies to understand situations and make appropriate decisions.

## CAREER

CR.1 Understand the meaning and importance of career self-awareness and career goals.

CR.2 Understand the relationship among career goals and interests, personal interests, aptitudes, and abilities.

CR.3 Understand the relationship among personal and academic decisions, career expectations, and future life decisions.

